

INSTALLATION INSTRUCTIONS

LUMENPOD® 16

LUMENPOD®
ANOTHER
LUMENRAIL®
COMPONENT
FOR LIFE SAFETY
AND LIGHT.

PAGE 1 OF 2

LIGHTING SAFETY INSTRUCTIONS:

READ THE INSTALLATION INSTRUCTIONS IN THEIR ENTIRETY BEFORE INSTALLING. IT IS IMPORTANT TO LEAVE THESE INSTRUCTIONS WITH THE OWNER OR FACILITY MANAGER OF THE BUILDING FOR FUTURE REFERENCE.



SCAN QR CODE for technical information, downloads, instructions, and system configuration guides

- CAUTION: Installation must be performed by a licensed electrician and all wiring must conform to local, state and national electrical codes
- LED driver: 24VDC, Class 2, configured in a listed system of components
- Mount remote driver(s) in a NEMA rated enclosure
- Systems may be used in a wet location with a suitably rated enclosure and connections
- All electrical components must be grounded and connected to GFCI per local codes and/or the NEC
- This product must be installed in a manner consistent with its intended use
- For trouble-shooting, installation questions and replacement component orders, contact Wagner at 888-243-6914

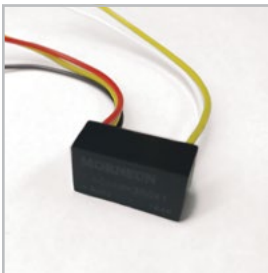
WARNING: TO REDUCE RISK OF ELECTRIC SHOCK, TURN OFF THE ELECTRICAL SUPPLY BEFORE INSTALLING OR SERVICING THE LIGHT FIXTURES AND DRIVER. FAILURE TO DO SO MAY RESULT IN SERIOUS INJURY AND/OR DAMAGE TO THE COMPONENTS.

RAILING SAFETY INSTRUCTIONS:

WAGNER ARCHITECTURAL SYSTEMS ARE ENGINEERED TO MEET IBC, ADA AND NFPA WHEN PROPERLY INSTALLED.

- Check and confirm all local railing code requirements
- A structural analysis may be required per local codes and is the responsibility of the customer
- Verify with the railing manufacturer that intended retrofit installations will not degrade the integrity of their railing
- CAUTION: It is highly recommended that a professional railing installer be used for ANY rail system, illuminated or not
- Please contact the factory for field installations: 888-243-6914 or email us: systems@mailwagner.com

LUMENPOD SUPPLIED PARTS:



DC/DC
mA Converter



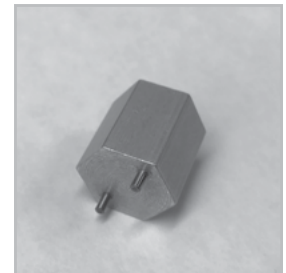
LULF
Lumenpod



Poke-Home
Junction Box



Poke-Home
Thru-Wire



Lumenpod
Installation Tool*

*Fits 9/16" socket

INSTALLATION INSTRUCTIONS

LUMENPOD® 16

LUMENPOD®
ANOTHER
LUMENRAIL®
COMPONENT
FOR LIFE SAFETY
AND LIGHT.

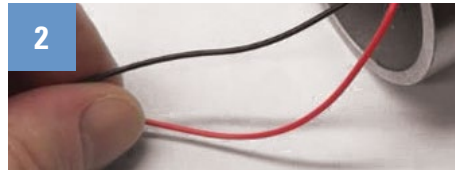
PAGE 2 OF 2

INSTALLATION

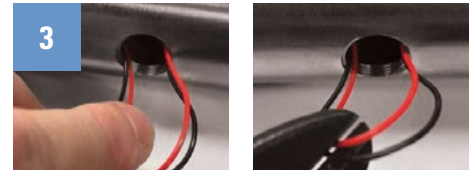
TO REDUCE RISK OF ELECTRIC SHOCK, TURN OFF THE ELECTRICAL SUPPLY BEFORE INSTALLING OR SERVICING THE LIGHT FIXTURES: For retro-fit applications and field drilling for Lumenpod installations, resealing the protective coating on railings that are not inherently corrosion resistant is required. Paint, cold galvanizing, or an equivalent material must be used to seal the bare metal surfaces prior to fixture installation.



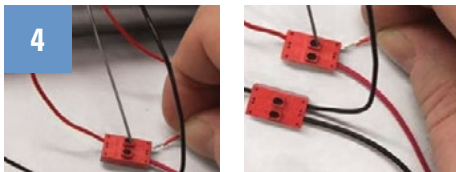
1. Ensure all Pod mounting holes are de-burred inside and out. Removal of all sharp edges is necessary to protect conductors that pass through the openings.



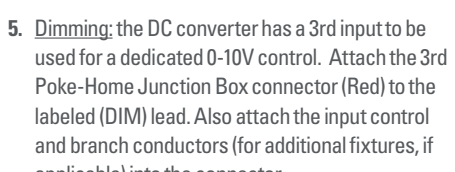
2. Install 24VDC positive (+) and negative (-) wires down the length of the hand rail. Refer to the remote distance chart for wire gauge recommendations.



3. Carefully pull a loop of the 24VDC main wires out of each Lumenpod mounting hole. Cut the wires at the center of each loop and strip insulation ends back 1/8".



4. Install the Poke-Home Junction Box connectors (Red) to both ends of the 24VDC main wires and the DC/DC converter input. Ensure that the polarity of wires from the converter (+ = red, - = black) connect to the correct polarity of the main 24VDC wires.



5. Dimming: the DC converter has a 3rd input to be used for a dedicated 0-10V control. Attach the 3rd Poke-Home Junction Box connector (Red) to the labeled (DIM) lead. Also attach the input control and branch conductors (for additional fixtures, if applicable) into the connector.

No Dimming: simply leave the Junction Box connector on the (DIM) lead as a termination.



6. Install a Poke-Home Thru-Wire connector (White) to both output wires, positive (+) and negative (-) on the DC/DC converter. Connect the corresponding polarity leads from the Pod on the other end.



7 & 8. Carefully feed wires, Poke-Home connectors, and DC converter through the mounting hole, into the railing. Push components into rail to clear mounting hole. After connectors, converter assembly and wires are in handrail, leave unit hanging and repeat process for additional Lumenpods.



9. On large projects, after ensuring safety, periodically test installed units (after 4-6 additions) to verify connections. After system is wired complete and tested, gently wind pod counterclockwise, 5x to prevent twisted wires, then carefully feed the remaining wire into the rail.



10. Thread the Lumenpod into the hole and tighten 1/2" way, using the provided insertion tool (fits a 9/16" socket) or a properly sized pair of snap ring pliers. Repeat process for additional Pods. After the system is tested again, apply Loctite® Threadlocker Blue 242® (or equal) to the exposed threads, to prevent loosening and then finish seating the Lumenpods with the insertion tool.

MAXIMUM REMOTE DISTANCE 100W/24VDC DRIVER WITH 2' SPACING

DC Driver Current & Conductor AWG	QTY	Distance to First Fixture from Driver	Distance to Last Fixture from Driver
500mA - 18ga	35	10'	80'
350mA - 18ga	44	10'	98'
500mA - 16ga	35	64'	134'
350mA - 16ga	44	64'	152'

Actual distances may vary depending on the total load, DC/DC current and fixture spacing. Verify all distance calculations with overall design of system. Conductor supply and project gauge specification by others.