

LEVEL LOCK™

GLASS SHOE RAILING SYSTEMS
FAST. EASY. BEAUTIFUL.
LET THE LIGHT IN

FASTER INSTALL TIME THAN LEADING BRANDS

Our **Level Lock™** system is installed in
a **third** of the time of the leading systems.



 **WAGNER**
ARCHITECTURAL SYSTEMS

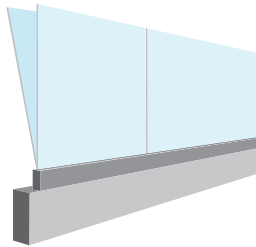
FABRICATED COMPONENTS | ARCHITECTURAL RAILING SYSTEMS | CODE COMPLIANCE EXPERTISE
QUESTIONS? Call 888-243-6914 or email info@mailwagner.com



LEVEL LOCK™

GLASS SHOE RAILING SYSTEMS
FAST. EASY. BEAUTIFUL.
LET THE LIGHT IN

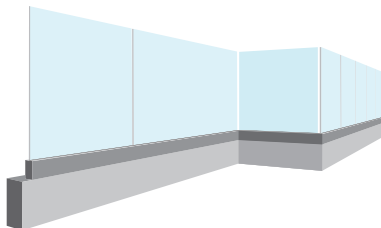
Level Lock™ technology allows for adjustability and ease of glass alignment.



Other leading dry glaze shoe moulding railing systems can take up to 3x the time to install.

Who has time for that?

Clean sightlines achieved with this post-less system and concealed fixings.



The Level Lock™ system is fast, easy and beautiful, allowing you to let the light in. Installers love this system as it features unparalleled adjustability and the Wagner quality you know and trust.

- Sold in complete install packs of 10ft
- Cladding options of aluminum, stainless or black anodized!
- Install packs include:
 - Holes for top fix fab
 - 2 Rubber gaskets
 - Aluminum cladding
 - 9 Mechanisms
 - 2 End Caps
 - **4 Joining Pins**
 - 10 Washers

FOR MORE INFORMATION:

Call 888-243-6914 or email info@mailwagner.com

BUY ONLINE:

wagnerarchitectural.com/level-lock-base-shoe-moulding

*Faster than installation time of other dry glaze shoe moulding handrailing

COMPONENTS



180° Stiffener



Center Concealed Spigot



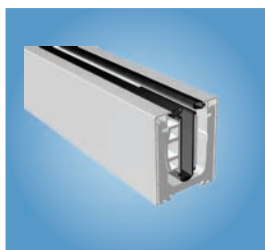
Center Concealed Spigot



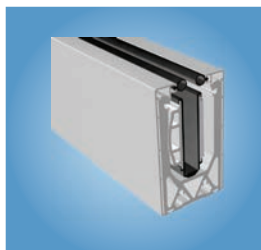
Stand Off Pin w/ Thread



Level Lock Center Concealed Spigot



Level Lock Shoe Moulding



Level Lock Shoe Moulding



Level Lock Dry Mount



Cladding