

# LUMENLINEAR™

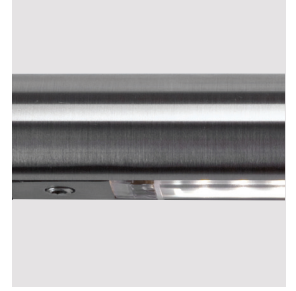
## Photometric Performance

Another Lumenrail® Component for Life Safety and Light



SCAN QR CODE

for technical information,  
downloads and instructions.

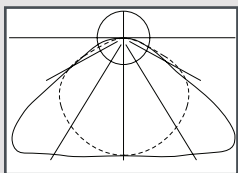


Wagner Architectural Systems' Lumenlinear, continuous length solutions, provide the output and options to meet your lighting requirements. Its soft light provides ample illumination for safety and ambiance without the glare or harshness of overhead lighting. Available with warm, neutral or cool white color temperatures, and a range of solid color options for static hues. Matte or transparent lens optics assist in further definition of your lighting specification and the standard low, mid and high-output offerings make Lumenlinear a highly flexible and practical solution for adding beauty and light to your life safety installations.

Wagner offers multiple ETL listed options for both 24VDC power supplies and NEMA enclosures. Quantities and types will be configured based on your specifications and design. Additional specification options are available by request. Not all options apply to all products, please verify compatibility with the factory.

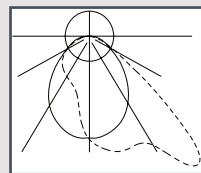
## ISOCANDELA OUTPUT

120°



Symmetric Orientation

Main Beam 45° + nadir



Asymmetric Orientation

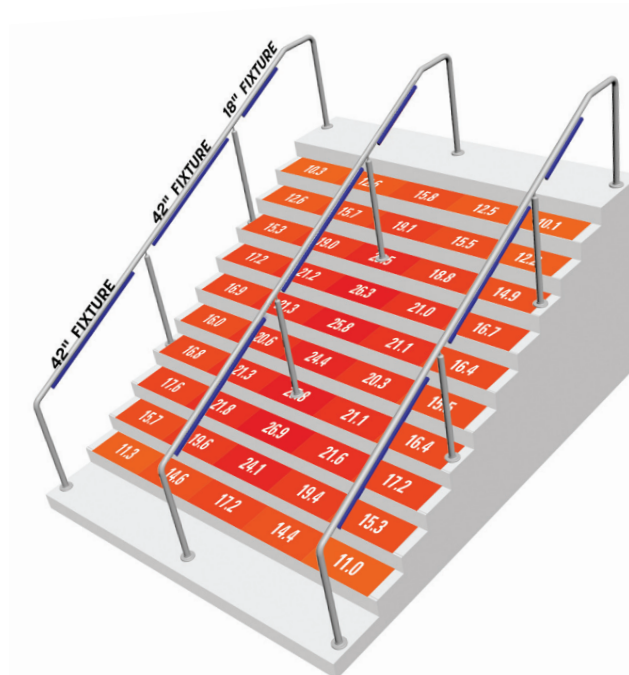
### FEATURES:

- L70 = 50,000 hours +
- 60° and 120° symmetric beam spreads
- 70° asymmetric output @ 45° +nadir
- Lumens/foot average:
- 152, 284 or 413 lpf (@4000K)
- CCT standard in 4 white options
- 4 solid color options including wildlife amber
- Up to 88 CRI standard
- 94+ CRI available upon request
- IES full cutoff classification when installed in Wagner Architectural Systems hand rail
- Industry leading forward throw output
- 24VDC, IP67, 5-year warranty
- Matte & transparent lens options
- Sealed, extruded aluminum housing

## ILLUMINANCE PLOTS

### 10' Wide Staircase:

- 6" rise, 12" treads
- LULS40K2070TA 42" & 18" Outside rails - Asymmetric
- LULS40K2070TS 42" & 18" Center rail - Symmetric



 @wagnercompanies

 **WAGNER**  
Architectural Systems

888-243-6914 // [rfq@mailwagner.com](mailto:rfq@mailwagner.com)  
10600 West Brown Deer Road // Milwaukee, WI 53224, USA

© 2021 R&B Wagner, Inc. All Rights Reserved.  
[WagnerCompanies.com](http://WagnerCompanies.com)  
LULS PHOT R3



Intertek

Page 1 of 2

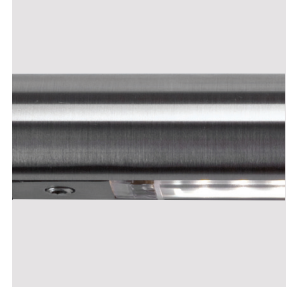
# LUMENLINEAR™

## Photometric Performance

Another Lumenrail® Component for Life Safety and Light



SCAN QR CODE  
for technical information,  
downloads and instructions.



### ILLUMINANCE PLOTS



#### 10' Wide Walkway Isofootcandle Plot:

- (5) LULS40K2070TA42 = 4000K, 2W/Ft,
- Transparent lens, asymmetric, 42" long
- Railing height 36"
- (Isofootcandle) calculation points on 2' center: 0.4fc @10'

Outputs	LOW (2W/ft)	
	Matte	Transparent
120° Optic		
3000 K	131 lpf	147 lpf
4000 K	132 lpf	152 lpf
70° Asym		
3000 K	126 lpf	130 lpf
4000 K	155 lpf	129 lpf

Outputs	MID (4W/ft)	
	Matte	Transparent
120° Optic		
3000 K	235 lpf	268 lpf
4000 K	247 lpf	284 lpf
70° Asym		
3000 K	206 lpf	237 lpf
4000 K	232 lpf	242 lpf

Outputs	HIGH (6W/ft)	
	Matte	Transparent
120° Optic		
3000 K	336 lpf	383 lpf
4000 K	361 lpf	413 lpf
70° Asym		
3000 K	290 lpf	290 lpf
4000 K	301 lpf	343 lpf

@wagnercompanies



888-243-6914 // rfq@mailwagner.com  
10600 West Brown Deer Road // Milwaukee, WI 53224, USA

© 2021 R&B Wagner, Inc. All Rights Reserved.  
WagnerCompanies.com  
LULS PHOT R3



Intertek

Page 2 of 2