

LUMENPOD® 16

Another Lumenrail®
Component for Life
Safety and Light

©2019 John Korom

COMPACT PERFORMER

The next generation point source from Wagner Architectural Systems has performance that far exceeds the expectations of its discreet 5/8" diameter. The mechanically threaded luminaire is designed for pathway illumination with mounting options for hand rail, guardrail, decks, and shelter or entry structures. Asymmetric performance can be precisely achieved, and superior harsh environment protection and vandal resistance are combined with a simple installation. The Lumenpod provides a low-profile architectural solution for new or retrofit applications and egress compliance opportunities



Specifications subject to change without notice. Verify data at time of order.

- Solid machined 316 stainless steel
- Universal installation in a variety of materials
- 116 lumens per watt LED (500 mA)
- 70° beam spread @ nadir
- 5 IES file supported optic distributions
- IK10 impact rating and secure installation
- 24VDC operation
- ETL wet location listed
- IP67 ingress protection
- Standard in 2700 K, 3000 K and 4000 K
- 4 CCT whites and solid colors available

LUMENPOD® 16

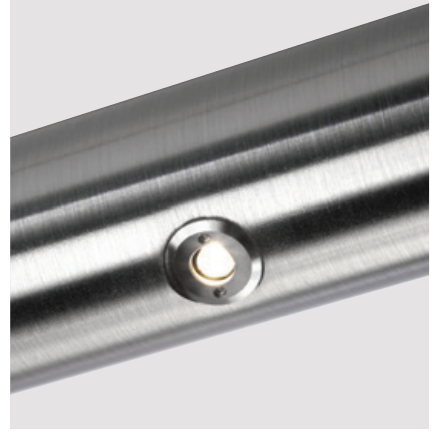
Another Lumenrail® Component
for Life Safety and Light

PROJECT NAME: _____

REP AGENCY: _____

APPROX. LINEAR FT: _____

SERVICE OPTIONS: Field Measure Job Site Support System Installation



SCAN QR CODE
for technical information,
downloads and instructions.

PART NUMBER BUILDER

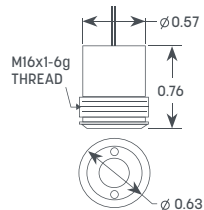
LULF40K703 EXAMPLE	LULF FIXTURE TYPE	COLOR TEMP *27K- 2700 K BLU- Blue *30K- 3000 K GRN- Green *40K- 4000 K RED- Red 50K- 5000 K AMB- Amber	OPTIC 16- 16° beam 23- 23° beam 46- 46° beam *70- 70° beam 94- 94° beam	DRIVE CURRENT *5- 500 mA *3- 350 mA <i>Extended life 100,000HR version requires 350 mA</i>
-----------------------	----------------------	--	--	---

* Indicates stock, other options may require additional lead-time.

ELECTRICAL SPECIFICATIONS

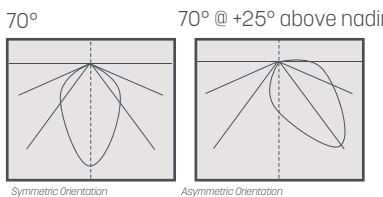
<p>Intertek All electrical connections to be made by a qualified electrician in accordance with all national, state and local electrical codes.</p>	24VDC INPUT VOLTAGE	ETL LISTED WET, IK10, IP67, CE CERTIFICATIONS	0-10V INPUT DIMMING	-40°F TO +120°F OPERATING TEMP
	CLASS 2 REQUIRED DRIVER	5 YEARS WARRANTY	UP TO 116 LM/W LED EFFICIENCY	80+ CRI

CONSTRUCTION



The Lumenpod's threaded stainless steel body dissipates heat directly into the mounting material. A machined shoulder positions it nearly flush with any diameter hand rail, as well as flat or square stock.

PHOTOMETRICS



Asymmetric performance can be fine tuned on fabricated systems by rotating the fixture around the rail diameter. A 25° angle provides superb illumination results in most applications. IES reports to view or download are available by scanning the QR code or visiting our website.

LUMENGEAR™ LED DRIVER & NEMA ENCLOSURE OPTIONS

Wagner offers multiple ETL listed options for both 24VDC power supplies and NEMA enclosures. Quantities and types will be configured based on your specifications and design. Additional specification options are available by request. Not all options apply to all products, please verify compatibility with the factory.

CLASS II DRIVERS:

- STD 100W
- Dali, DMX, 0-10V Dimming Protocols
- Multiple Wattages
- Made in USA Units Available

NEMA ENCLOSURES:

4X - Polycarbonate, Painted Steel or Stainless Steel

LUMENPOST™:

Integrated 100W, 0-10V DIM

Specifications may change without prior notice, verify data at time of order, all rights reserved

@wagnercompanies



888-243-6914 // rfq@mailwagner.com
10600 West Brown Deer Road // Milwaukee, WI 53224, USA

© 2021 R&B Wagner, Inc. All Rights Reserved.
WagnerCompanies.com
LULF SUBM R7