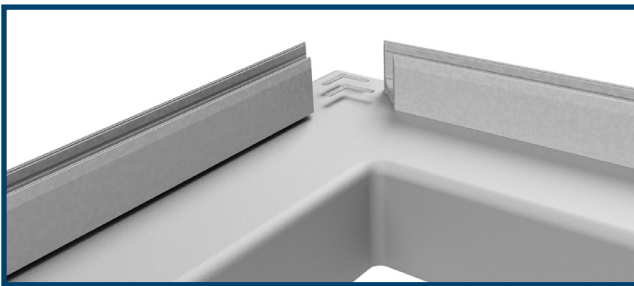
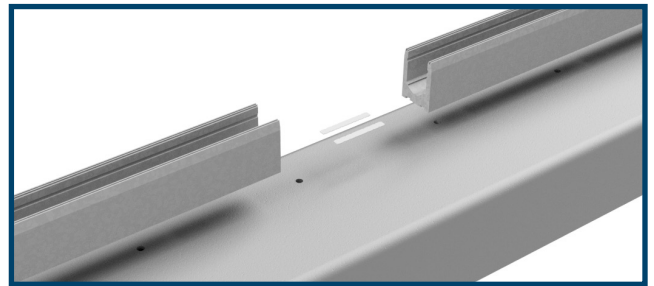


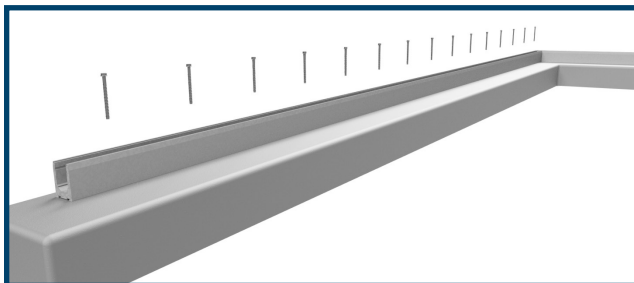
1. Lay out your shoe installation. Slide the optional alignment tabs in the channels at the bottom of the base shoe to help keep sections of the base shoe in line with each other. Measure and trim the shoe as needed for your site's requirements. When trimming the shoe, the last anchor should be within 6" of the trimmed edge of the shoe. Based on your cut length, this may require trimming material from both ends of a section of shoe.



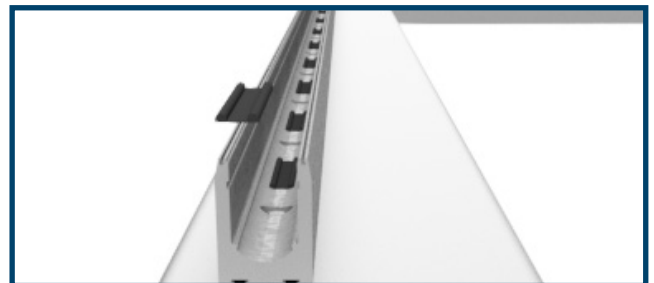
2. Use the shoe to mark your anchor location on the mounting surface. Move the shoe and drill the pilot holes needed for your anchors.



3. Anchor the shoe to the mounting surface per your anchor's manufacturer specifications.

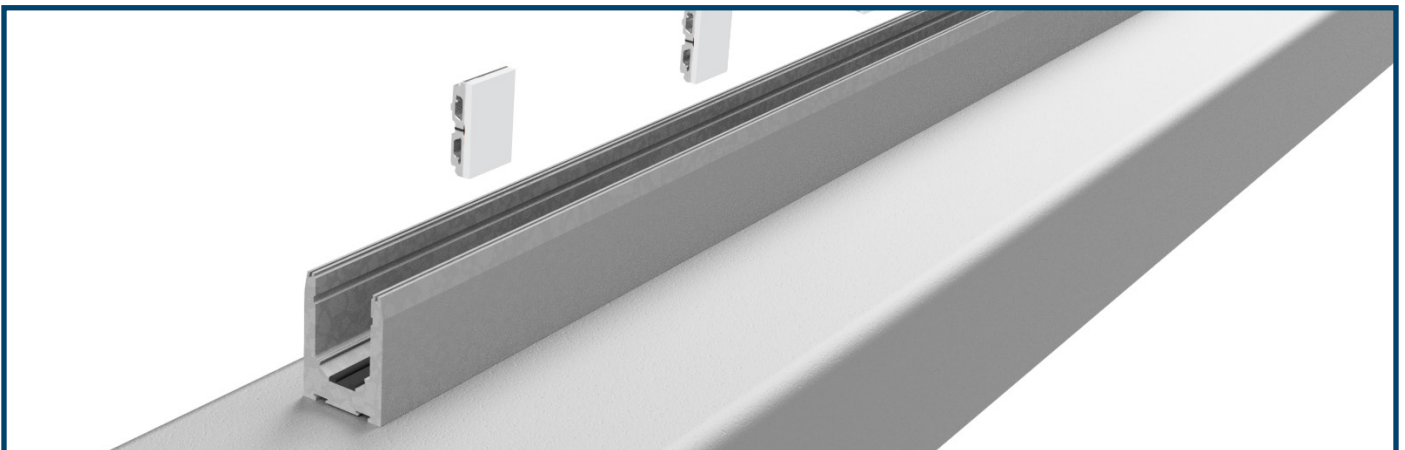


4. Base shoe isolator pads are required to protect the glass from contacting the shoe and anchor heads. Install the base shoe isolator pads (found in the pack of mechanisms) at least every 12".

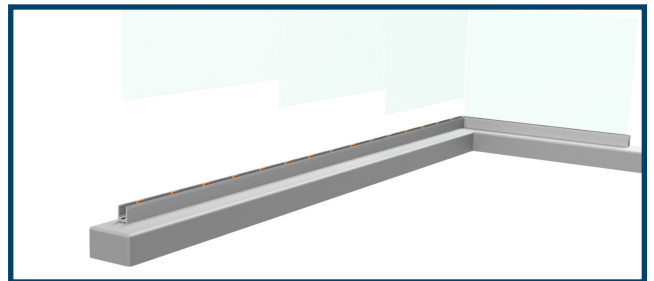
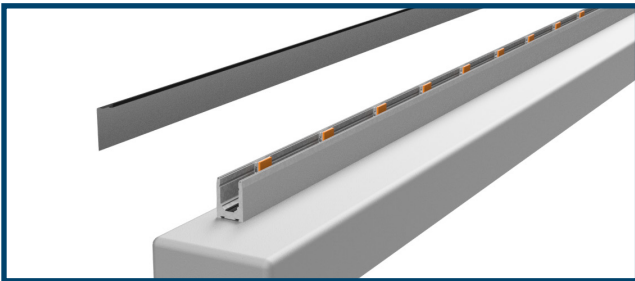


5. Open a pack of 10 mechanisms and locate the non-clamping rocker mechanism. The rocker mechanism has a single large isolator pad attached to it.

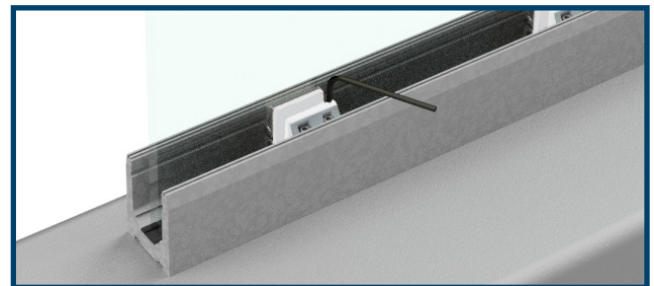
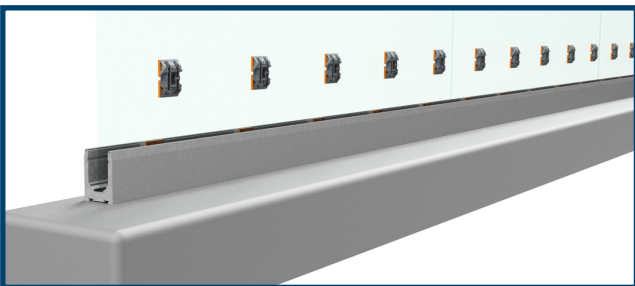
6. Snap a rocker mechanism into the far side of the shoe channel at least every 12". Each panel of glass should be supported by at least 2 mechanisms.



7. Optional: If you are installing the shoe on a balcony or have limited access to the far side of the shoe, you can install the cladding or gasket on the side of the shoe that you have less access to at this time.
8. Place the glass panels into the shoe. Try to keep the glass panels tight to the rocker side of the mechanisms.



9. Insert the clamping mechanisms into the shoe. The clamping mechanisms must line up across from the rocker mechanisms
10. Tighten the clamping mechanisms. Alternate between adjusting the left screw (tilts glass away from you) and the right screw (tilts glass towards you) to ensure an even alignment. Once the screws are finger-tight and the glass panel is level, torque all screws to between 10 ft-lbs and 14 ft-lbs.



11. Apply the remaining cladding or gasket.
12. Install end caps on any exposed ends of the base shoe.

